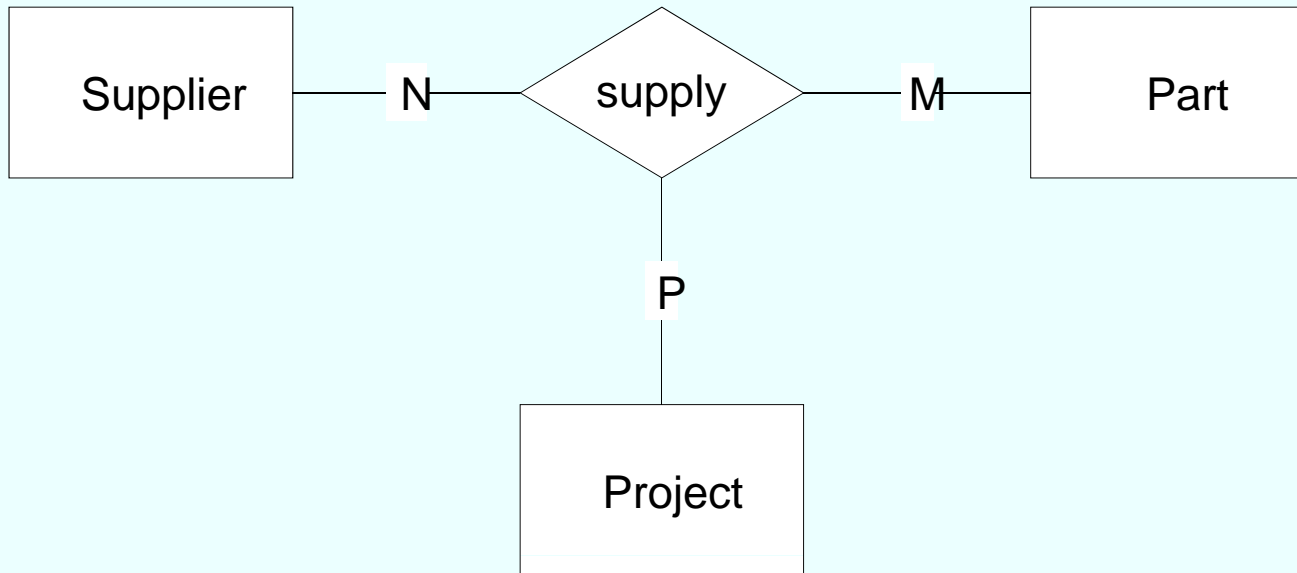


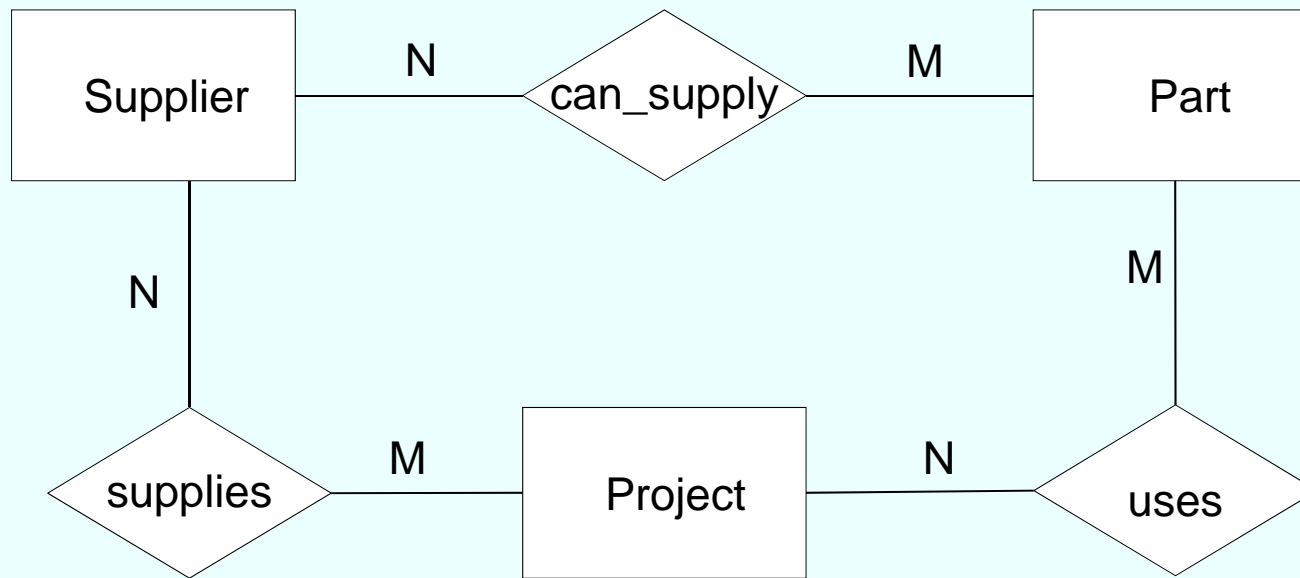
Example, ternary RelShip



supp1	part1	proj1
supp2	part2	proj1
supp1	part2	proj2

supp1	part2	proj1
-------	-------	-------

Example, by projection: transformed to binary RelShips



supp1	part1
supp2	part2
supp1	part2

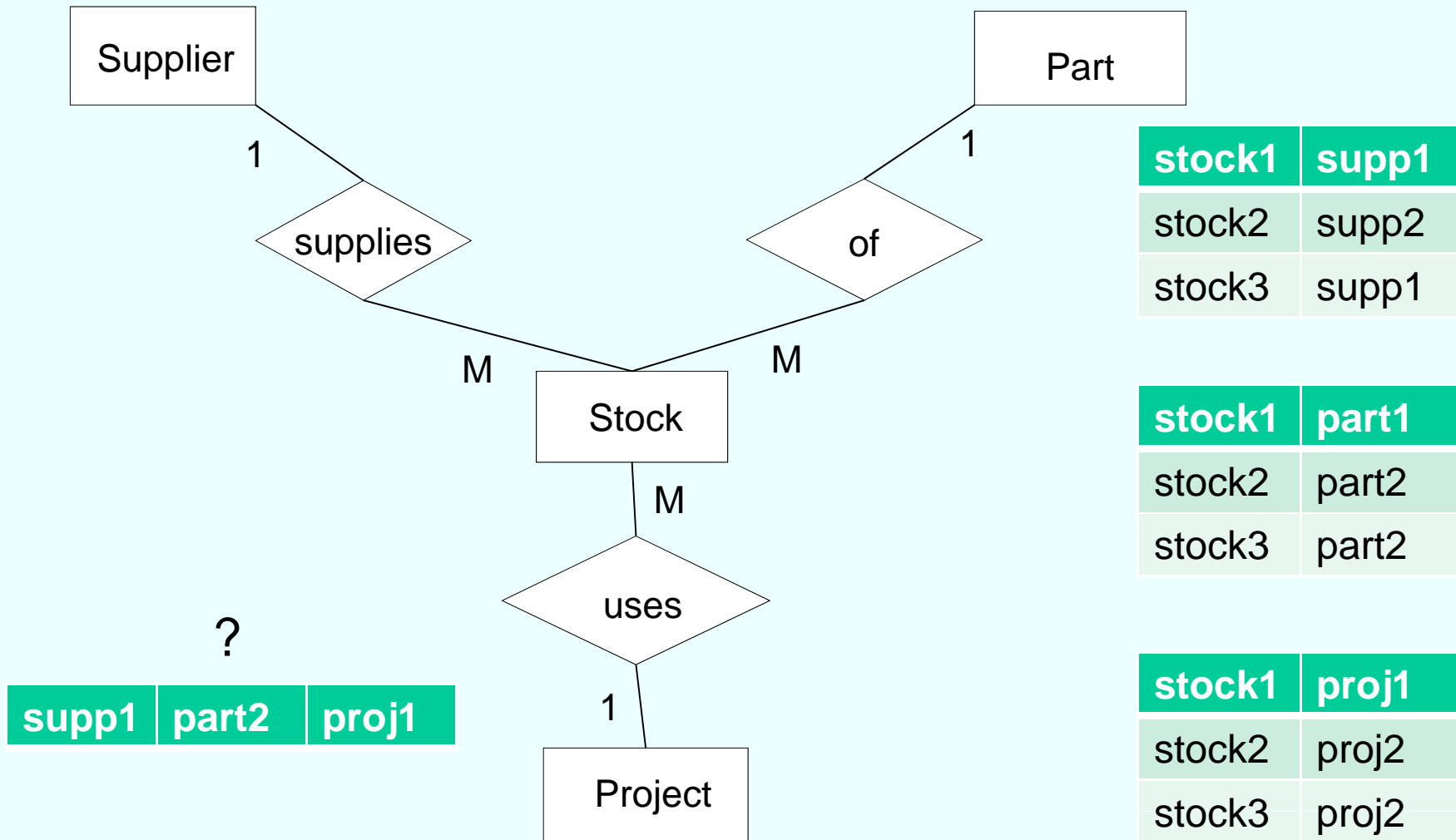
supp1	proj1
supp2	proj1
supp1	proj2

part1	proj1
part2	proj1
part2	proj2

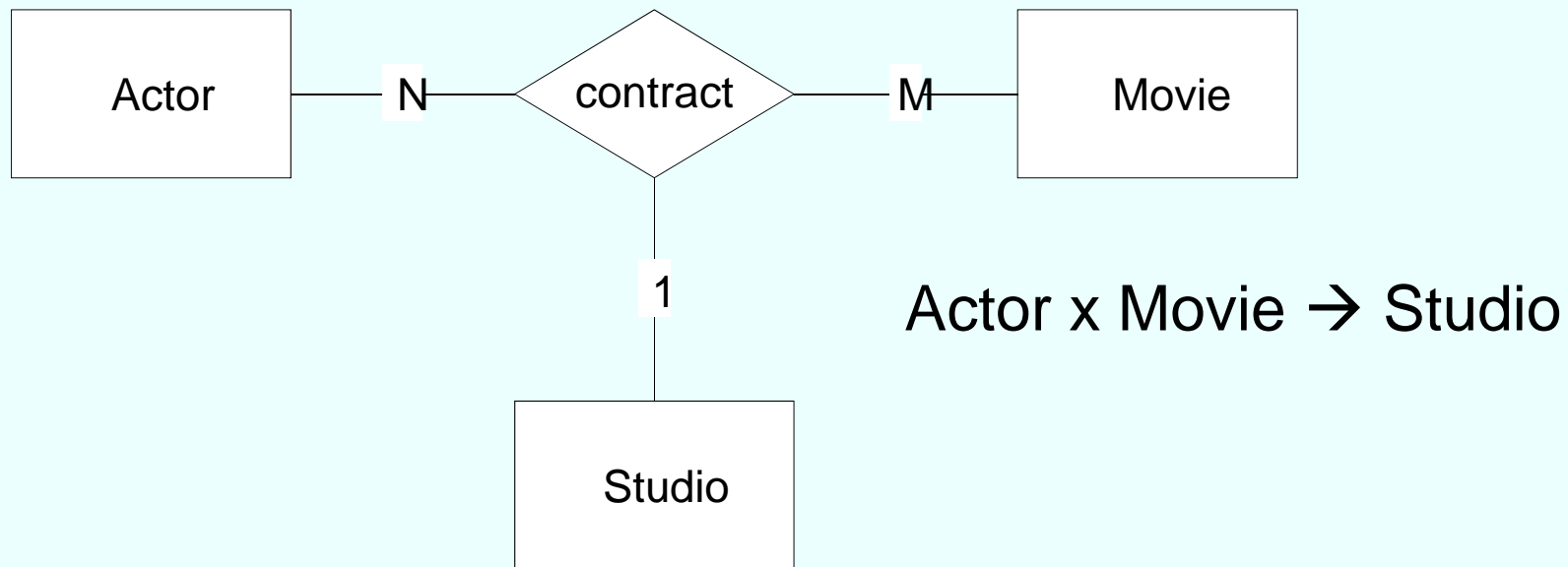
?

supp1	part2	proj1
-------	-------	-------

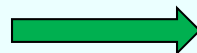
Example, by objectification: transformed to binary RelShips



Example, ternary RelShip



act1 | mov1 | stud1



~~act1 | mov1 | stud2~~

Example, by objectification: transformed to binary RelShips

